



AAUW

**Breaking through Barriers**

**for Women and Girls**

# AAUW Mission and Value Promise

**Mission:** *Advance equity for women and girls through advocacy, education, and research.*

**Value Promise:** *As a member of AAUW, you belong to a community that breaks through educational and economic barriers so that all women have a fair chance.*



Breaking through Barriers  
for Women and Girls

# Strategic Design Process

## **Culmination of:**

- 3+ years, 25,000+ inputs
- Action at the 2007 Convention

## **Next Steps: Preparations for 2009 Convention**

- Proposed Bylaws posted and published
- Explanations, demonstrations, discussion in *Current Topics Briefings*.



# Purpose of All Our Efforts

## Transition to the New AAUW through :

- The new proposed bylaws
- The *Current Topics Briefing* series
- Vision of ourselves as part of our 21<sup>st</sup> century community of AAUW



# AAUW After Restructure: Current Structure

IRS calls AAUW a “complex organization”

- Primary: Association)– 501 (c)(4) “social welfare” org. - 100K members, 1000+ branches
- Subordinate: EF – 501 (c)(3) “charitable” org.
- Subordinate: LTI – 501 (c)(3) charitable org.



Breaking through Barriers  
for Women and Girls

# AAUW

## After Restructure

The consolidated organization will be known as AAUW and will control:

- Primary - 501(c)(3) membership org (AAUW) – a charitable entity with tax deductible dues
- Subordinate – Small 501 (c)(4) org (AAUW Action Fund) – Lobby Corps, election activities, voter guides – activities NOT tax deductible.
- LTI programs will all be absorbed by AAUW



# AAUW

## After Restructure

- All programs previously in the current the 501 (c)(3) entity, EF, will continue to be housed in the 501 (c)(3) entity, to be called AAUW, including:
  - Fellowships and Grants
  - Legal Advocacy Fund (LAF)
- Donations to support these programs will be tax deductible.



# AAUW

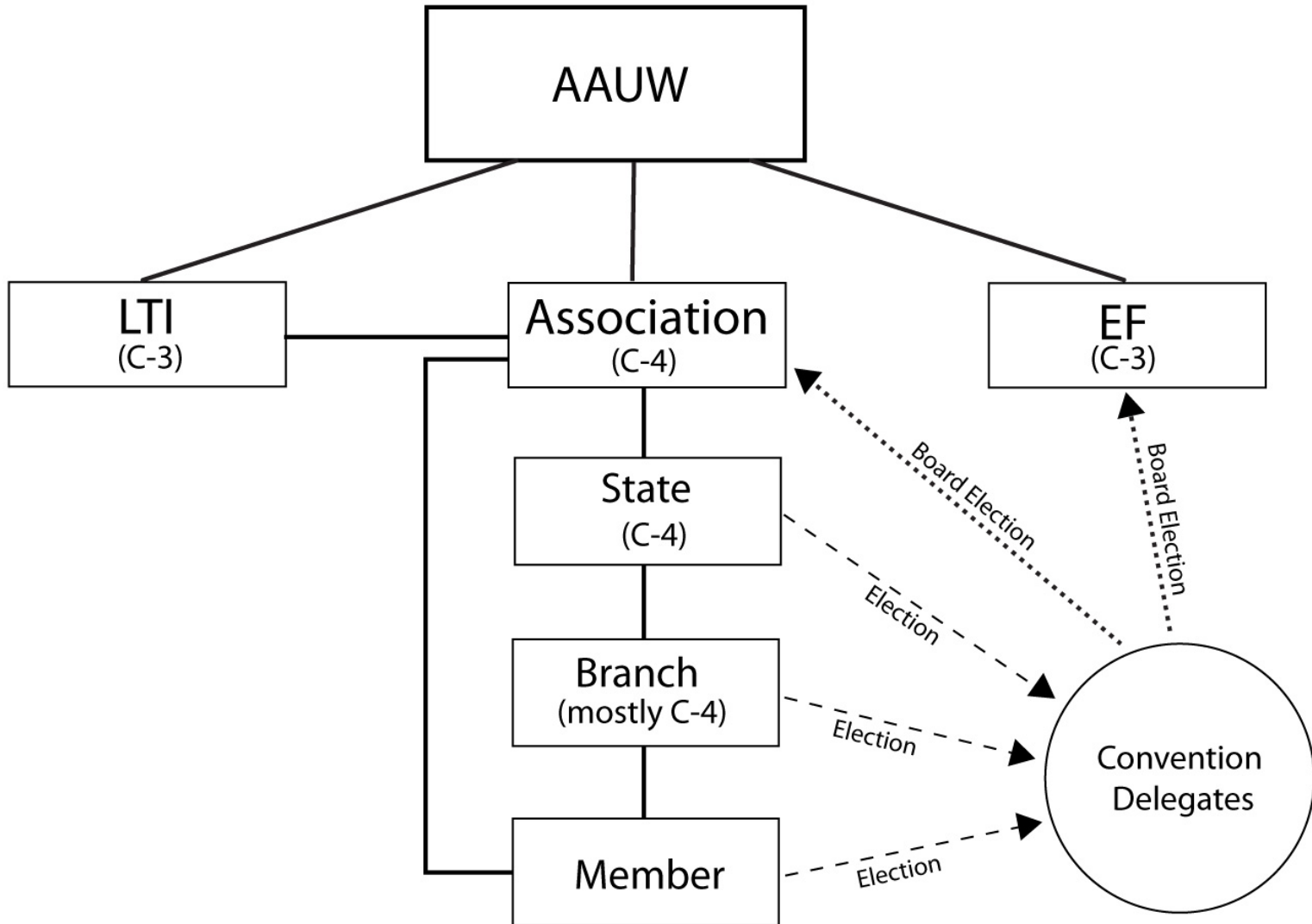
## After Restructure

All LTI programs will be continued & managed by AAUW, including:

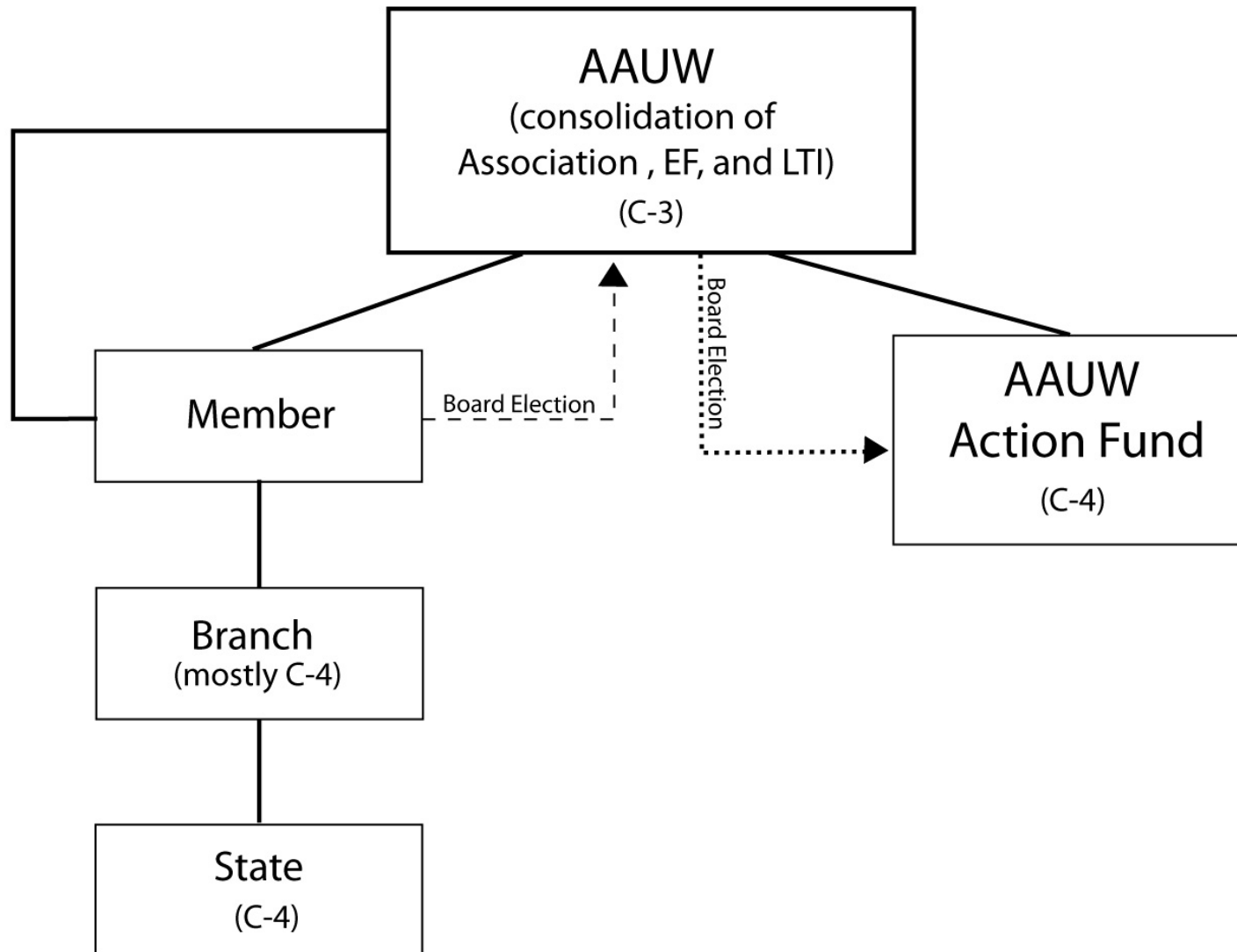
- NCCWSL, Campus Action Projects, Campaign College, the biennial convention, etc.
- Donations to support these programs will be tax deductible.



# AAUW Current Organization and Structure Chart



# AAUW Organizational and Structure Chart After Restructuring



# AAUW

## Breaking through Barriers

Briefing # 5

Breaking through Barriers:

- Expresses the essence of AAUW—what we have been, are and will be.
- Amplifies our mission statement—*Advancing equity for women and girls through advocacy, education, and research.*



Breaking through Barriers  
for Women and Girls

# AAUW

## Value of Branches

### Briefing #8

The very concept of a branch acknowledges the anchoring and synergistic relationship with the entire tree of AAUW.

It is our branch structure that enables AAUW to be a powerful advocate for women and girls.



**Breaking through Barriers**  
for Women and Girls

# AAUW

## Proposed bylaws and the impact on Branches

Empower branches to organize in whatever way is most beneficial and will best help them be involved in mission-based work.

The draft proposed bylaws are to provide guidance based on our AAUW principles, yet flexible enough to accommodate change.



# AAUW

## Program in a Box

Briefing #7

A portfolio of program activities for branches with an emphasis on mission-based programming that engages the community.



Breaking through Barriers  
for Women and Girls

# AAUW

## After Restructure

Beginning April 1, 2009, FY 2010 individual member dues will be \$49.00

- \$46.00 will be tax deductible
- \$3.00 supports Lobby Corps & election-related activities – Not tax deductible.



# AAUW Membership Pilot Program

## Dues Payment Options

Option #1: Participating branches collect national, state, and branch dues and transmit payments to the national office in three ways.



Breaking through Barriers  
for Women and Girls

# AAUW Membership Pilot Program

## Option #1:

- A) Lump sum payment by branch business credit card;
- B) Lump sum payment by a single branch business check; or
- C) Collection of member's individual dues payment checks to be sent together in a batch.



# AAUW Membership Pilot Program

## Dues Payment Options

### Option #2:

Individual members of an MPP branch may pay their own national, state, and branch dues online with a personal credit card.



**Breaking through Barriers**  
for Women and Girls

# AAUW Membership Pilot Program

Benefits for branches and members of  
paying all dues online:

- Immediate receipt of payment confirmation.
- Ability to see payment and current membership status.



# AAUW Branch/State Local Scholarship Clearinghouse Pilot Program

Centralized, standardized, online undergraduate scholarship application posting and processing to support your branch/state scholarship program.



**Breaking through Barriers**  
for Women and Girls

# AAUW Branch/State Local Scholarship Clearinghouse Pilot Program

This *voluntary* pilot program designed to:

- Make the scholarship process easier and more efficient for branches/states.
- Expand the scholarship applicant pool
- Standardize application forms
- Provide application data verification



# AAUW Branch/State Local Scholarship Clearinghouse Pilot Program

Branches and states still :

- Set eligibility and selection criteria
- Scholarship award amounts
- Select their own scholarship awardees
- Award their own scholarships



# AAUW Branch/State Local Scholarship Clearinghouse Pilot Program

## **Benefits for branches and states:**

- Provides branches a standardized data applicant data collection tool
- Provides verification of applicant credentials
- Increases applicants pool by expanding marketing of branch/state scholarships
- Raises visibility of AAUW nationwide philanthropy



# Categories of Membership

The membership of AAUW will be made up of individuals and partner members.

- Any individual who supports AAUW's mission will be eligible for membership.
- Educational and other institutions and organizations that meet the criteria will be eligible for membership as partners.

# Voting

- All AAUW members shall have one vote on any noticed business (board elections, bylaws amendments, Public Policy Program, noticed resolutions).
- Members will be able to vote through almost any possible means (by mail, e-mail, phone, telegram, etc.) without having to attend a meeting.
- No proxy voting

# Elections

- One member = one vote.
- Votes may be cast in person, electronically, or by mail.
- Preferential voting will be used when there are more than two candidates for president or vice president.

# Article VI. Officers and Directors

- Elected
  - Vice president
  - President
  - Seven directors-at-large
- Appointed by board members
  - Six additional directors-at-large
  - A finance vice president and a board secretary shall be appointed from the elected or appointed members

# AAUW

## Breaking through Barriers

- June 26-28, 2009
- Renaissance St. Louis Grand & Suites
- Help make decisions about AAUW's future
- Hear distinguished speakers
- Get training and resources for your community
- Be inspired and reenergized!



Breaking through Barriers  
for Women and Girls